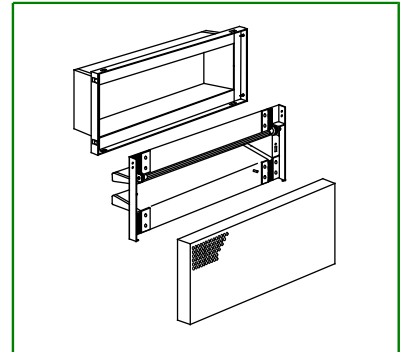


Wall exhaust air device EHC



EHC is suitable for business premises and office blocks, schools, hospitals, kitchens and other similar interiors. The device has low noise level in wide pressure range, is easy-to-clean and can be installed to a rectangular duct or through a connection box TE to a circular duct.

Quick Selection

Size	Connection		Air flow l/s (m ³ /h) at sound level		
	Box	Device	25 dB(A)	30 dB(A)	35 dB(A)
EHC-300-150	199.3	146x296	100	120 (432)	140
EHC-500-150	249.5	146x496	160	190 (684)	220
EHC-800-150	314.3	146x796	220	255 (918)	305

Product Facts

- Exhaust air device
- With or without connection box
- Low noise level
- Easy to clean

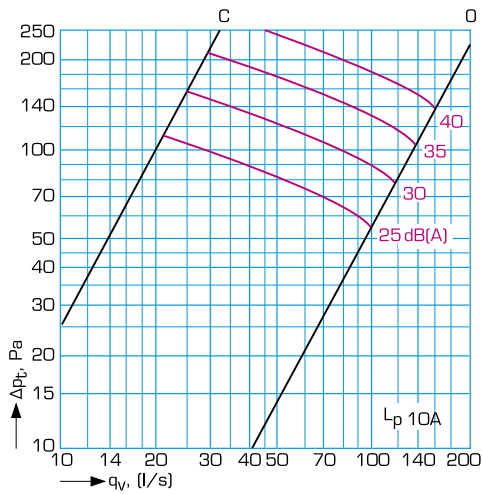
Product code example

Wall Diffuser EHC-300-150
Connection Box TEA-300-150

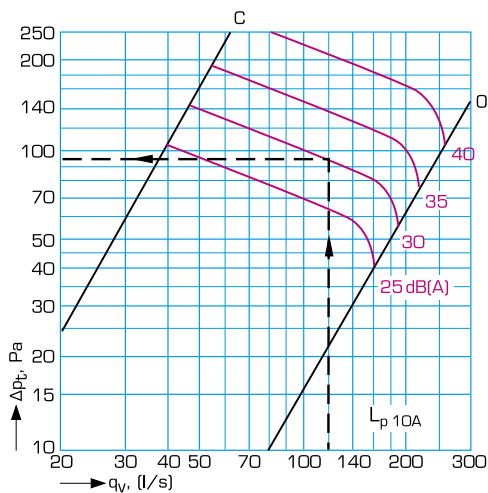
AIRTREND Ltd
Predstavništvo u Beogradu
Kumanovska 14, 11000 Beograd
Tel: 011/3836886, 3085740
Faks: 011/3444113
e-mail: gobrid@eunet.rs
web: www.airtrend.rs

Air flow, pressure drop, sound level, sound data

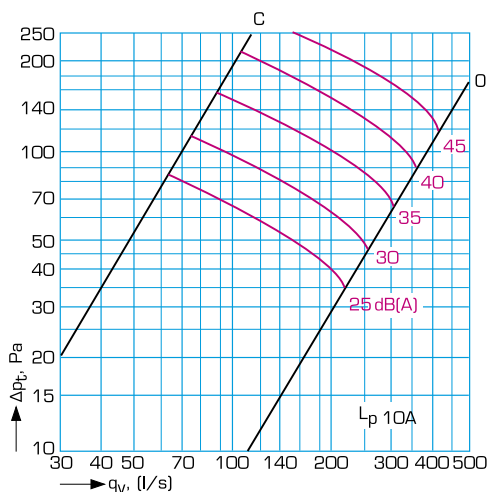
EHC-300-150



EHC-500-150



EHC-800-150



EHC without or with connection box (connection alternative SIDE = A and OVER/UNDER = C).

For connection alternative EHC with plenum box (connection alternative BACK=B), the sound power level will increase according to the table below:

EHC-300-150	appr. 6 dB
EHC-500-150	appr. 4 dB
EHC-800-150	appr. 2 dB

Selection Example

1. The required exhaust air volume flow is 120 l/s.
2. Sound power level in the room $L_{pA} < 35$ dB(A).
3. It must be made sure that the ductwork can be adjusted within the allowed sound level limits.
4. It must be possible to carry out the air flow measurement with ease and with sufficient accuracy.

Solution

1. EHC-500-150; $q_v = 120$ l/s is chosen to be examined.
 2. The allowable sound power level L_{p10A} is calculated taking account of the number of terminal devices, actual room attenuation etc. The result can be e.g. $L_{p10A} \sim 30$ dB(A).
 3. The allowable sound level requires the range of adjustment to be $\Delta p_t = 25 - 95$ Pa.
 4. The air volume flow is measured by measuring the pressure difference between the pressure taps.
- EHC-500-150 is chosen.

Sound power level

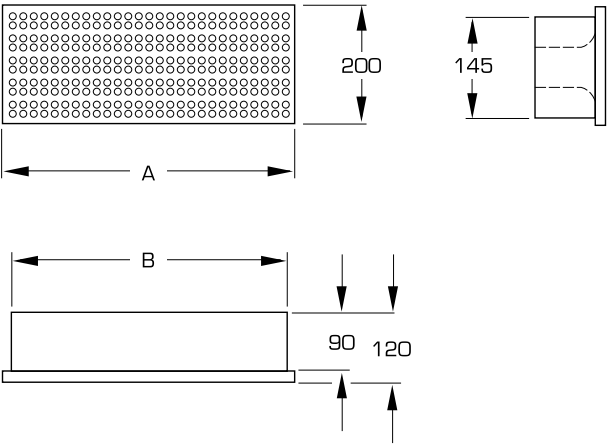
Size	Sound power level correction in dB at						
	125	250	500	1000	2000	4000	8000
300-150	3	-2	-3	-1	-2	-8	-12
500-150	5	-2	-2	0	-2	-9	-26
800-150	5	1	-1	-1	-3	-7	-13
Tolerance	±3	±2	±2	±2	±2	±2	±3

Sound attenuation

Size	%	Sound power level correction in dB at							
		63	125	250	500	1000	2000	4000	8000
300-150	100	14	10	8	10	5	5	6	5
	0	15	13	11	16	12	7	8	8
500-150	100	13	8	6	10	7	5	5	5
	0	13	12	11	16	17	9	8	9
800-150	100	11	6	4	8	5	4	5	5
	0	11	8	7	14	13	6	7	8
Tolerance		±6	±3	±2	±2	±2	±2	±2	±3

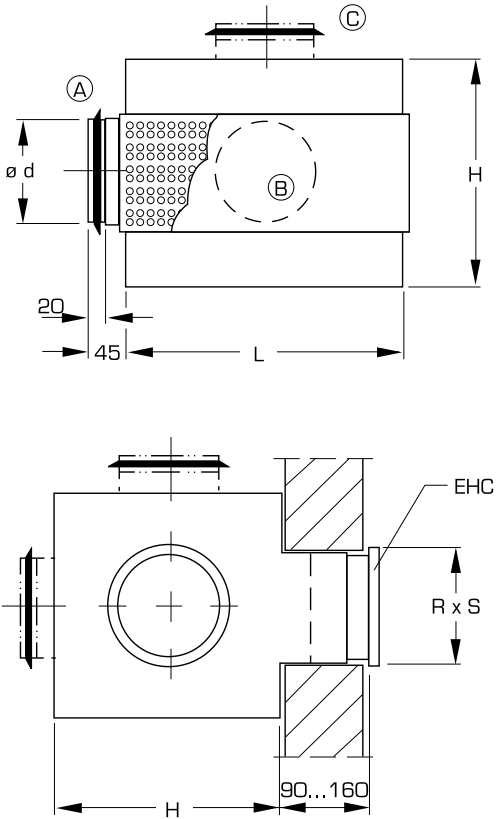
Dimensions and weights

Wall diffuser EHC



Size	A [mm]	B [mm]	Weight [kg]
300-150	350	295	2,5
500-150	550	495	3,7
800-150	850	795	5,5

Connection box TE



Koko	Ød [mm]	H [mm]	L [mm]	R [mm]	S [mm]
300-150	199	250	302	310	160
500-150	249	300	502	510	160
800-150	314	365	802	810	160

Installation, adjustment, application and function, material, product code

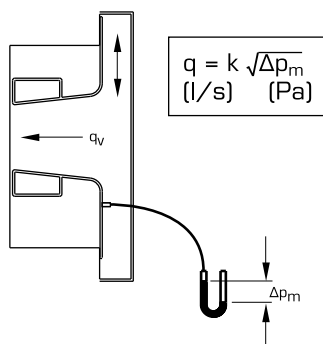
Installation

EHC can be installed to a rectangular duct, to a ductwork section or to a connection box (accessory) with a rubbergasket jointing collar for circular ducts. When using a connection box, the telescopic casing enables installation to walls of different thicknesses (90 - 160 mm).

Air flow measurement and adjustment

The air volume flow is measured by measuring the pressure difference between the integrated pressure taps. The measurement is done with the front plate installed.

The air flow is adjusted after removing the front plate and then turning the regulator rod.



Position	300-150	500-150	800-150
0	1.9	3.5	6.0
1	2.6	5.8	10.8
2	4.0	8.5	14.6
3	5.7	11.2	19.0
4	7.1	14.0	23.9
5	8.9	16.4	28.3
6	10.8	19.0	32.9
7	12.4	21.0	35.4

Application and function

EHC is the right exhaust air device for business premises and office blocks, schools, hospitals, kitchens and other similar interiors. The device has low noise level in wide pressure range, is easy-to-clean and can be installed to a rectangular duct or through a connection box TE to a circular duct.

The EHC exhaust air device consists of a telescopic casing, regulator blades and a removable front plate.

The front plate and regulator section are mounted with springs.

The connection box TE is uninsulated and easy to clean.

Instructions

Directions for installation, adjustment and care are set out in detail in our technical instruction which accompanies each product. The instruction is also accessible on www.flaktwoods.com.

Technical data and dimensioning

For complete dimensioning details, please see FläktWoods product selection program. Contact our nearest sales office for further information.

Material and surface finish

The casing is made of galvanized steel sheet and meets the requirements for corrosivity class C2 in accordance with EN ISO 12944-2.

The regulator blades are made of aluminium and the front plate of steel sheet painted white.

Standard colour is white (RAL-9010). Other colours on request.

The connection box is supplied as standard in hot-dip galvanized steel sheet.

Descriptive text

Wall diffuser EHC manufactured by Fläkt Woods in e.g. size 300-150.

Product code

Wall diffuser
EHC-aaa-bbb

Nominal size, length-height (aaa-bbb)
300-150, 500-150, 800-150

Connection box
TEa-bbb-ccc

Connection alternatives (a)
A = Connection from side (short)
B = back side
C = from top / bottom

Size of grille connection, length-height (bbb-ccc)
300-150, 500-150, 800-150